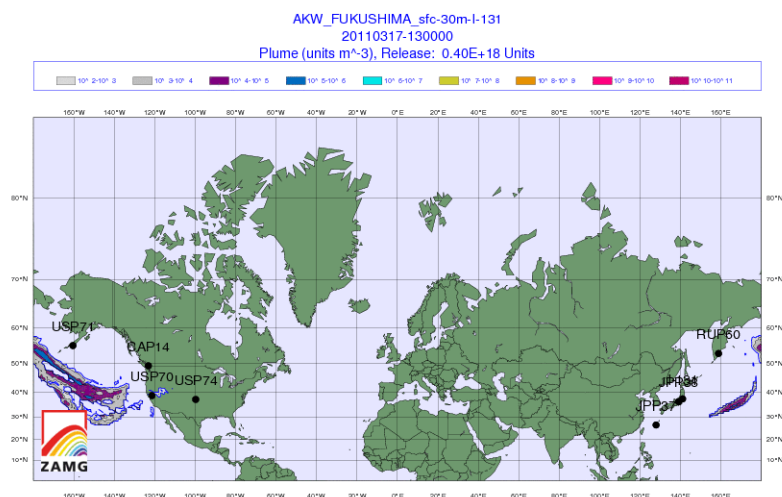


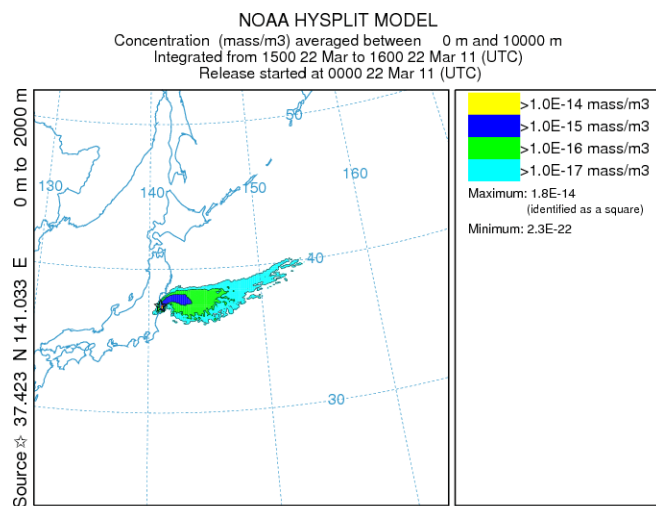
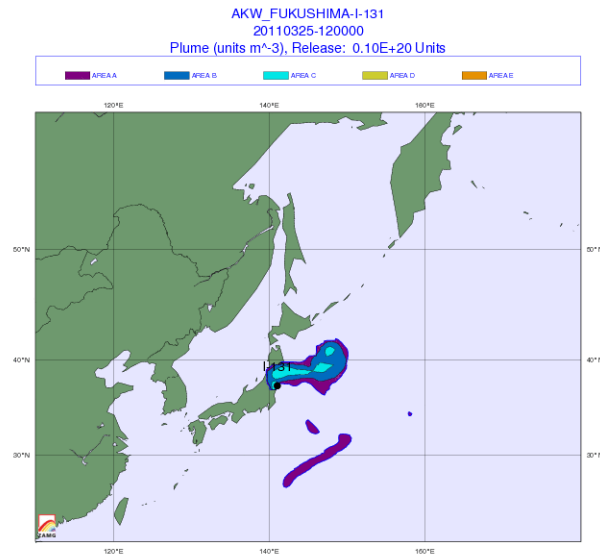
Chernobyl Cleanup Survivor's Message for Japan: 'Run Away as Quickly as Possible'  
 Nuclear Energy Institute - Information on the Japan Earthquake and Reactors in That Region  
 Fukushima Engineer Says He Helped Cover Up Flaw at Dai-Ichi Reactor No. 4 - Bloomberg  
 RDTM\_Radiation\_Maps\_Independent\_Multiple\_Sources\_0000!  
 YouTube - How To Detoxify Radiation  
 Disaster Prevention and Nuclear Safety Network for Nuclear Environments / English Top Page  
 Modélisation de la dispersion des rejets radioactifs dans l'atmosphère à l'échelle globale  
[http://mextrad.blob.core.windows.net/page/23\\_Aichi\\_en.html](http://mextrad.blob.core.windows.net/page/23_Aichi_en.html)  
 MEXT : Reading of environmental radioactivity level by prefecture, Time series data (Graph) (English version)  
 MEXT : Reading of environmental radioactivity level (English version)  
 MEXT:Ministry of Education, Culture, Sports, Science and Technology  
 上水 (蛇口水) 、定時降下物のモニタリング : 文部科学省  
[http://www.mext.go.jp/component/english/\\_icsFiles/afieldfile/2011/03/22/1304052\\_2219.pdf](http://www.mext.go.jp/component/english/_icsFiles/afieldfile/2011/03/22/1304052_2219.pdf)  
 Home Page\_Truther Girls!  
 The Truther Girls' Blog | Truth and Jest  
 COVERUP AT EPA: Live Public DATA- Negligence or Incompetence?, page 7  
 Neutron beam observed 13 times at crippled Fukushima nuke plant | Kyodo News  
 YouTube - March 12, 2011 - Current assessment of Geologic Activity - CONFIRMED MELTDOWN 11am CST  
 Radiation monitoring at KEK | KEK  
 CDC Radiation Emergencies | Sheltering in Place During a Radiation Emergency  
 Calculate Your Radiation Dose | Radiation Protection | US EPA  
<http://www.psr.org/resources/radiation-and-public-health.pdf>  
 Anbex Inc. - Manufacturers and distributors of IOSAT  
 Anbex Inc.  
 Noah's Ark: Potassium Iodide Dosage, Shelf Life and Sources  
 Potassium iodide Vitamins & Nutrition at Bizrate - Buy Health & Beauty Supplies Online  
 Potassium Iodide Health Information Brief  
 EARTHQUAKE 3D  
 Treatments for Nuclear Contamination | Dr. Mark's Blog  
 Japan map of Japan Radiation Maximum by Prefecture by Do,Ken,To,Fu - TargetMap  
<http://www.psr.org/resources/radiation-and-public-health.pdf> - Good!  
 Radiation Glossary | Radiation Information and Answers Glossary for the above link.  
 Celestial Matters: View topic - Online Radioactivity Measurements in Japan  
 RSOE EDIS - Emergency and Disaster Information Service  
 How to Detoxify Radiation and Radioactivity From Your Body  
 Healing Cancer Naturally via Alternative Holistic Cancer Treatment: Welcome!  
 Lethal in Japan - the real story on radiation  
 Japanese Radiation: Movement Through the Atmosphere :: University Communications Newsdesk, University of Maryland

» Japanese only 'estimating' radiation, not actually measuring Alex Jones' Infowars: There's a war on for your mind!  
 Radionuclide Blankets United States; Authorities Insist Levels Are Harmless  
 Harmless? Chernobyl Radiation Killed Nearly One Million People  
 TEPCO : 福島第一原子力発電所 | <-- Maybe BS..?

Neutron beam observed 13 times at crippled Fukushima nuke plant | Kyodo News  
 More cases of radiation in water reported - UPI.com  
 Philippines bans Japanese chocolate | ABS-CBN News | Latest Philippine Headlines, Breaking News, Video, Analysis, Features  
 stretchingminds  
 NHK WORLD English

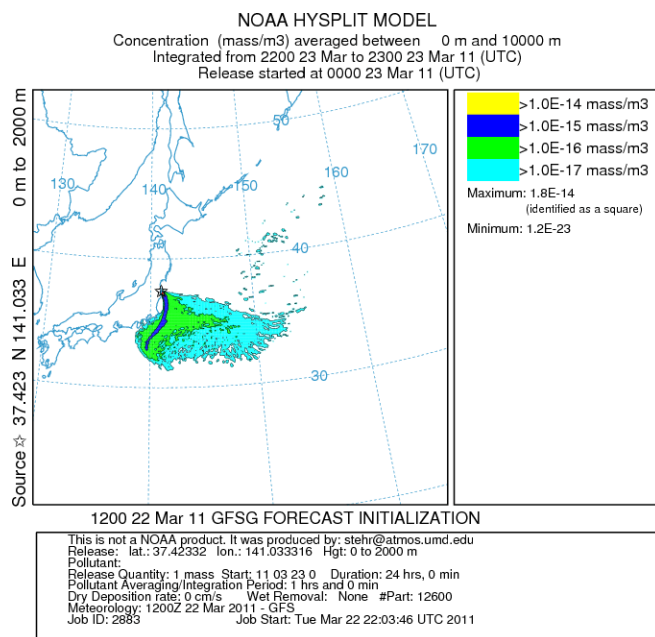
Exposing Deception - Home





## GFSG METEOROLOGICAL DATA

This is not a NOAA product. It was produced by: stehr@atmos.umd.edu  
Release: lat.: 37.42332 lon.: 141.033316 Hgt: 0 to 2000 m  
Pollutant:  
Release Quantity: 1 mass Start: 11 03 22 0 Duration: 24 hrs, 0 min  
Pollutant Averaging/Integration Period: 1 hrs and 0 min  
Dry Deposition rate: 0 cm/s Wet Removal: None #Part: 12600  
Meteorology: 1200Z 22 Mar 2011 - GFS  
Job ID: 2882 Job Start: Tue Mar 22 21:33:49 UTC 2011



The animation above shows the dispersion of 1 unit mass of material injected between a height of 0 and 2000 m altitude, over Fukushima. The color bars show how the concentration of this material evolves as atmospheric mixing disperses the material. If 1 ton of material were emitted, the color bars correspond to concentrations of:

Yellow = 10 nanograms per cubic meter  
Dark Blue = 1 nanograms per cubic meter  
Green = 0.1 nanograms per cubic meter  
Light Blue = 0.01 nanograms per cubic meter

